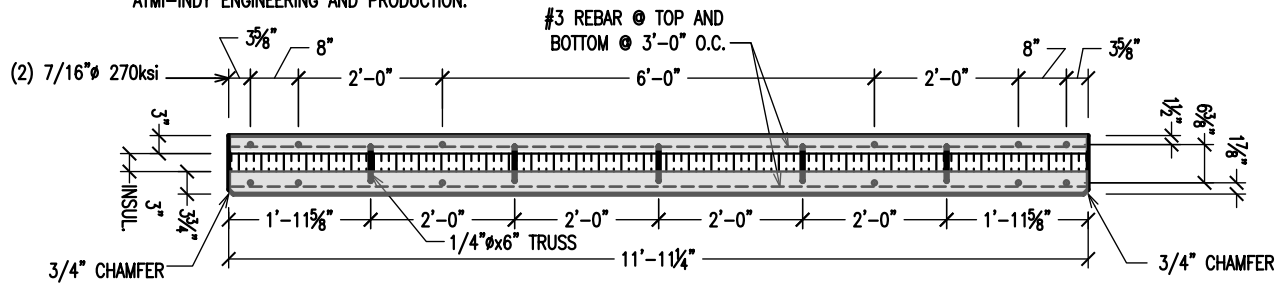
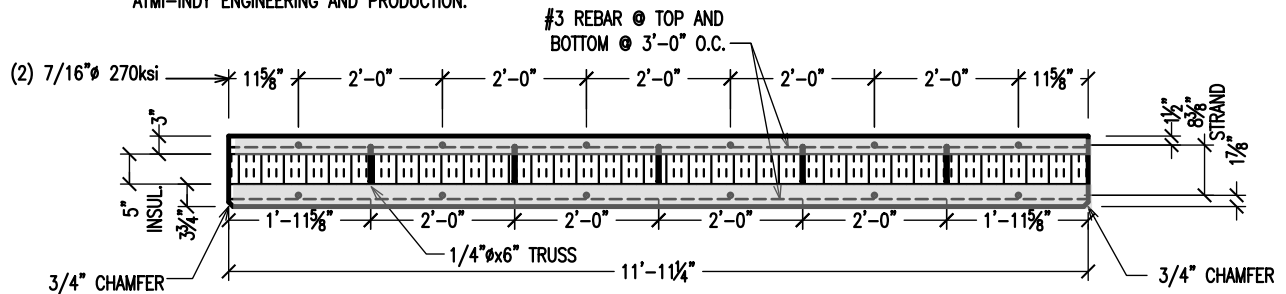


NUMBER OF STRAND AND PLACEMENT DETERMINED BY
ATMI-INDY ENGINEERING AND PRODUCTION.



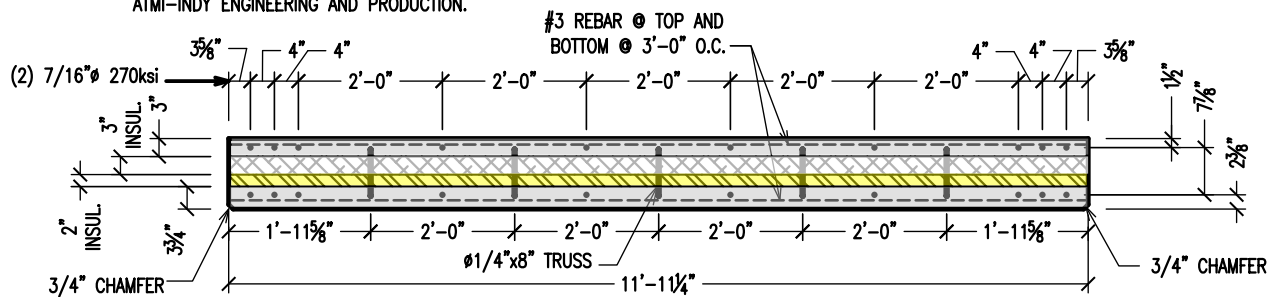
9 3/4" PANEL W/ 3" EXPANDED POLYSTYRENE INSULATION

NUMBER OF STRAND AND PLACEMENT DETERMINED BY
ATMI-INDY ENGINEERING AND PRODUCTION.



11 3/4" PANEL W/ 5" EXPANDED POLYSTYRENE INSULATION

NUMBER OF STRAND AND PLACEMENT DETERMINED BY
ATMI-INDY ENGINEERING AND PRODUCTION.



11 3/4" PANEL W/ 3" EXPANDED POLYSTYRENE INSULATION
AND 2" EXTRUDED POLYSTYRENE INSULATION

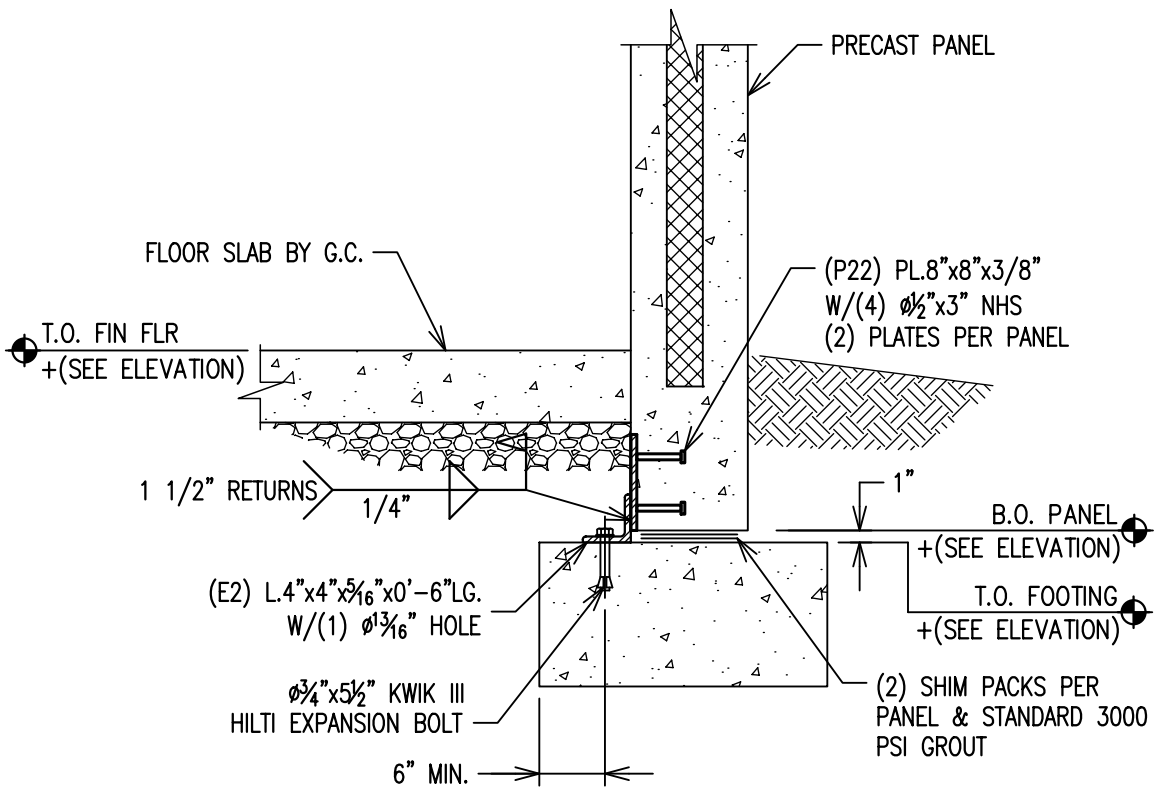


PANEL CROSS SECTION

DATE: 3-24-09

DRAWN BY: KML

REVISED: 12-8-10



4 | PANEL TO FOOTING CONNECTION
 SCALE: 3/4" = 1'-0" | 9 3/4" THICK PANEL



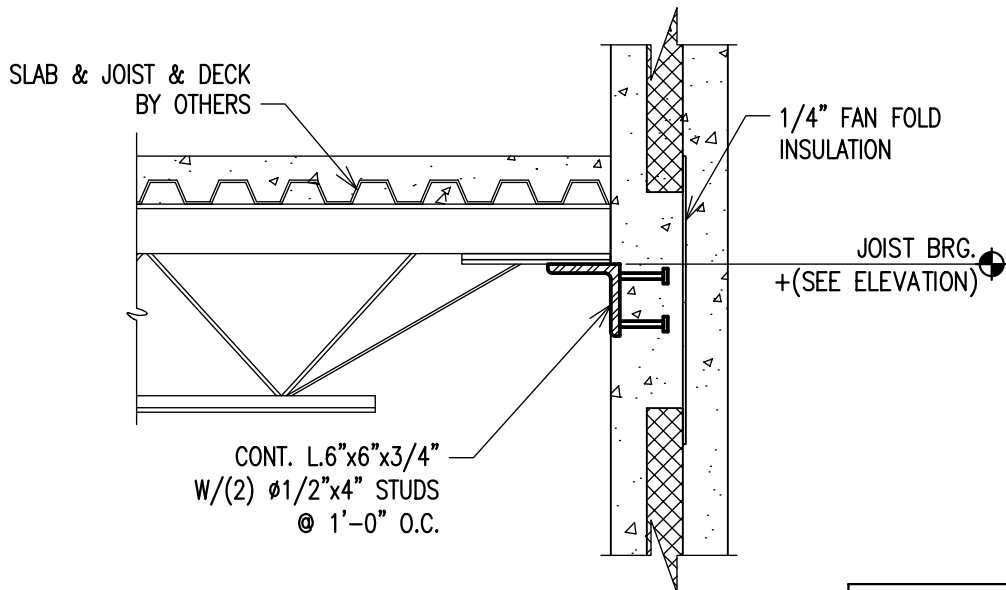
INTERIOR FOOTING CONNECTION

DATE: 2-3-09

DRAWN BY: IOP

REVISED: 12-7-10

1.1



Wy = ?	kip
W \perp = ?	plf
W \parallel = ?	plf

? JOIST BEARING SECTION @ 2nd FLR.
SCALE: 3/4" = 1'-0" | 9 3/4" THICK PANEL



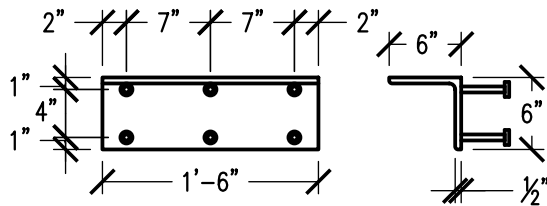
JOIST BEARING @ 2ND FLOOR

DATE: 2-3-09

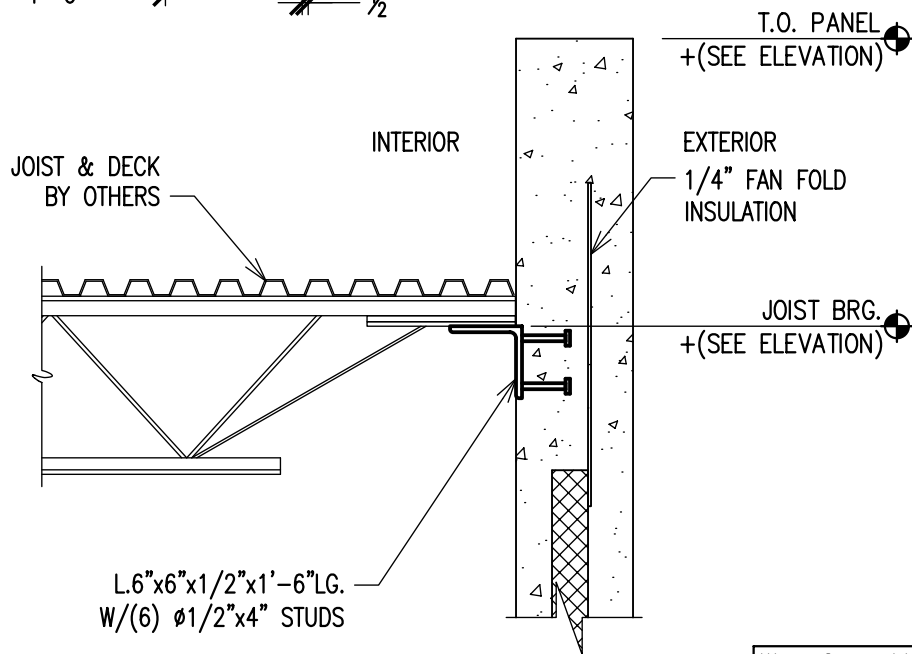
DRAWN BY: IOP

REVISED: 12-7-10

3.4



ATMI DOES NOT SUPPLY HOLES IN ANGLES. HOLES TO BE DRILLED BY OTHERS FOR JOIST ATTACHMENT.



1 JOIST BEARING SECTION
SCALE: 3/4" = 1'-0" | 11 3/4" THICK PANEL

W _y = ?	kips
W _⊥ = ?	plf
W = ?	plf

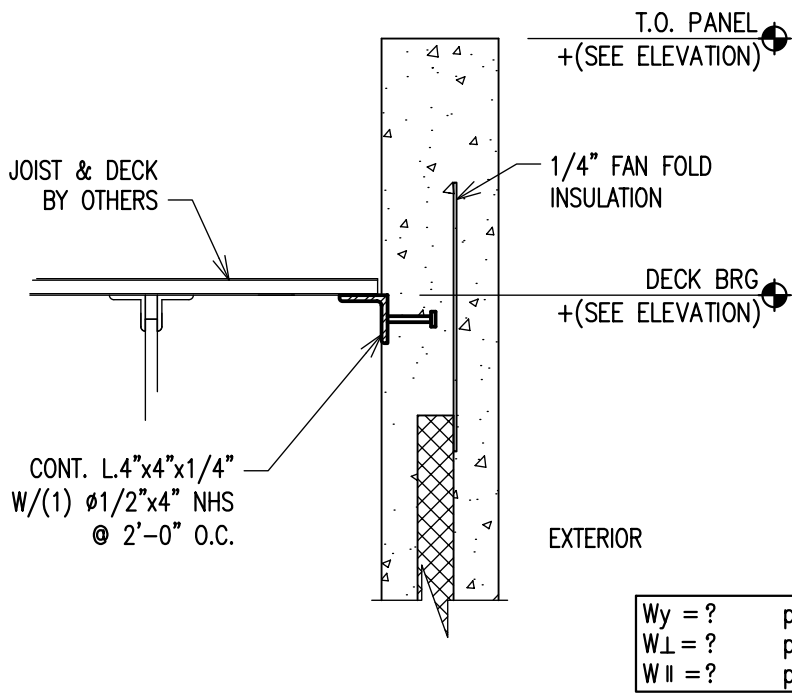


JOIST BEARING - INDIVIDUAL ANGLE

DATE: 12-8-10

DRAWN BY: DJS

REVISED:



? DECK BEARING SECTION
 SCALE: 3/4" = 1'-0" 19 3/4" THICK PANEL

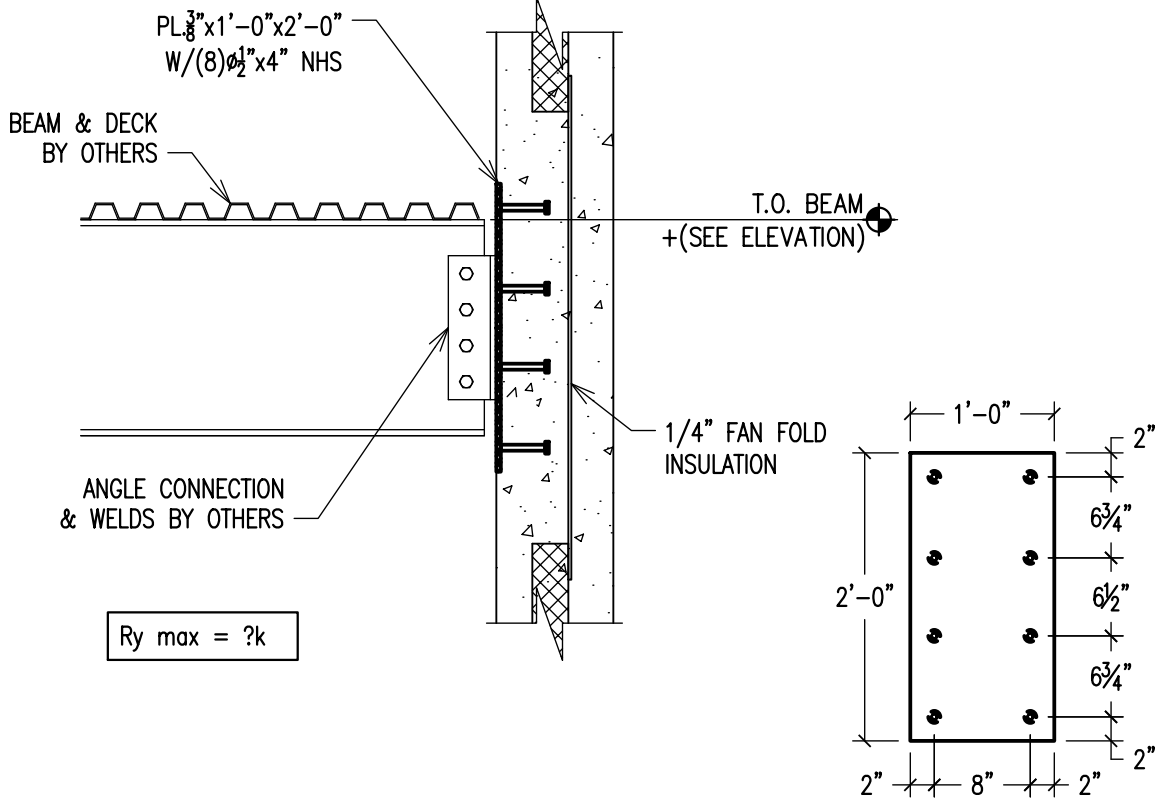


DECK BEARING SECTION

DATE: 2-3-09

DRAWN BY: IOP

REVISED: 12-7-10



2 | BEAM CONNECTION
 SCALE: 3/4" = 1'-0" 19 3/4" THICK PANEL

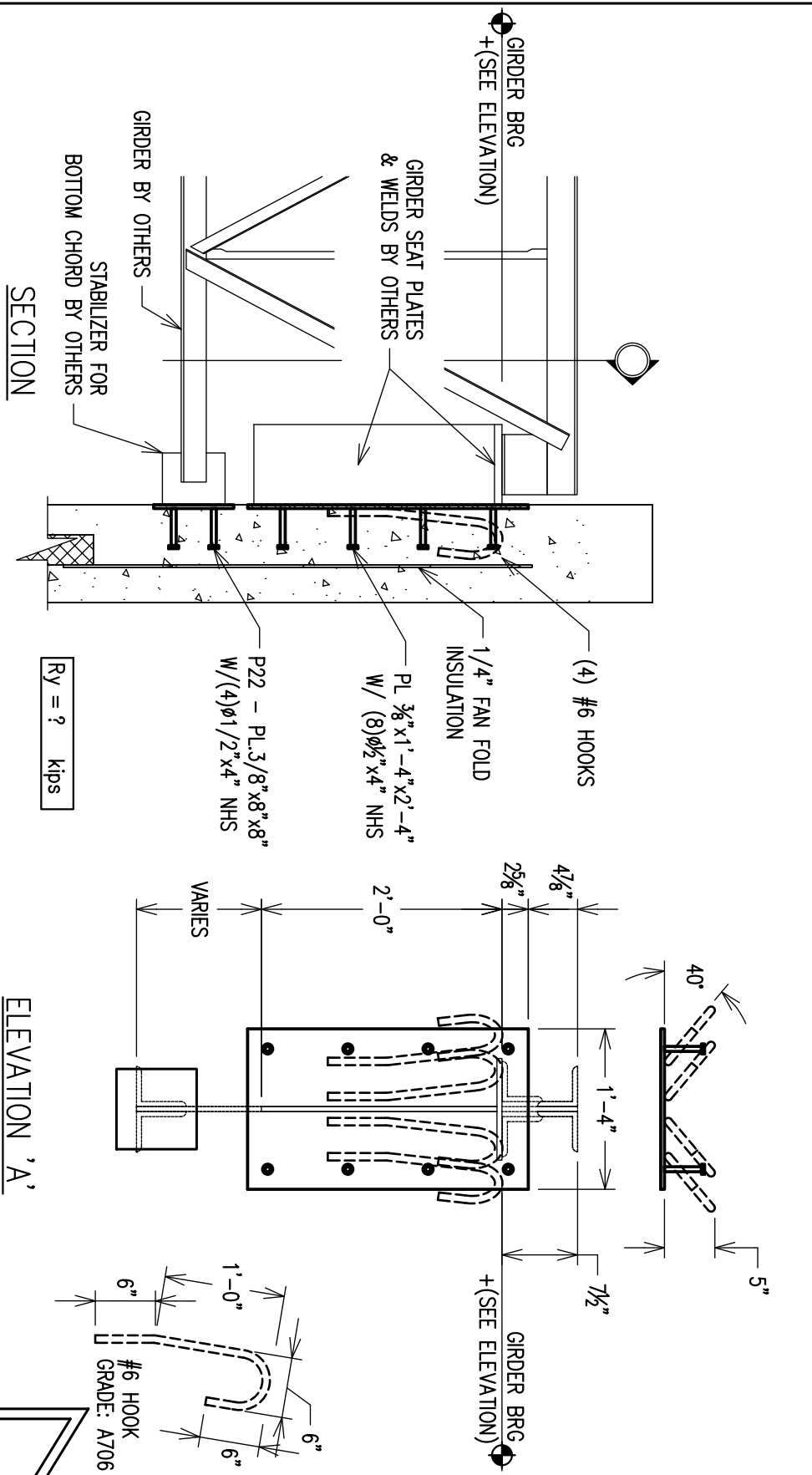


BEAM PLATE CONNECTION

DATE: 2-3-09

DRAWN BY: IOP

REVISED: 12-7-10



JOIST GIRDER BEARING

SCALE: 3/4" = 1'-0" 19 3/4" THICK PANEL

Ry = ? kips

ELEVATION 'A'

GIRDER CONNECTION

DATE: 2-3-09

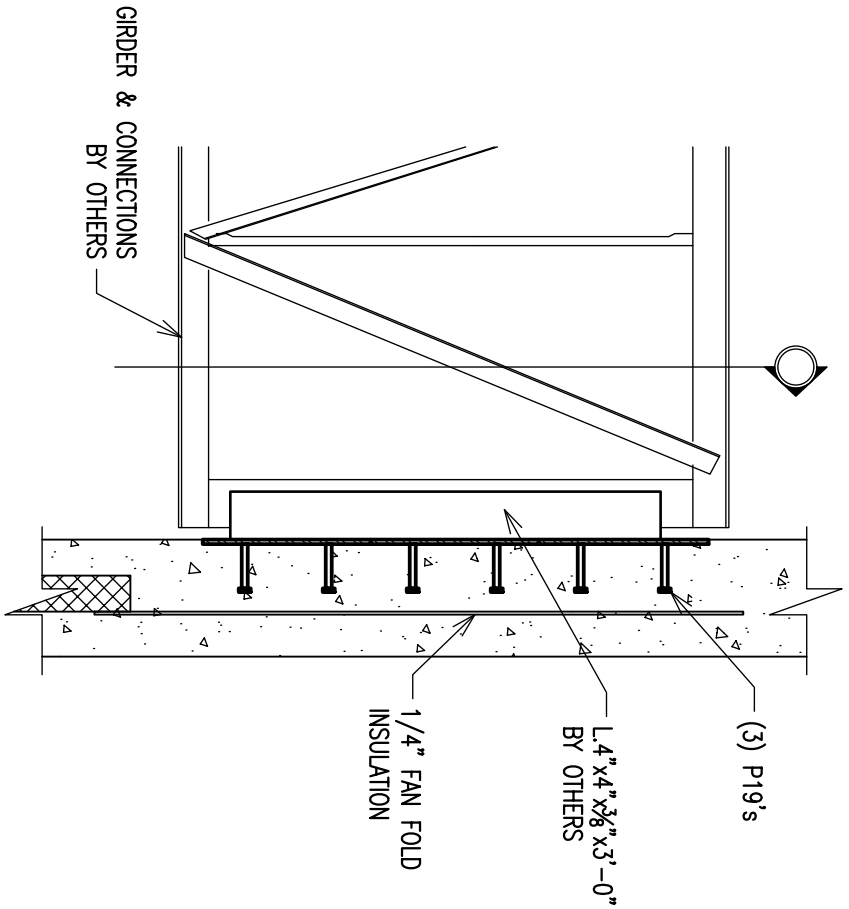
DRAWN BY: IOP

REVISED: 12-7-10

6.1



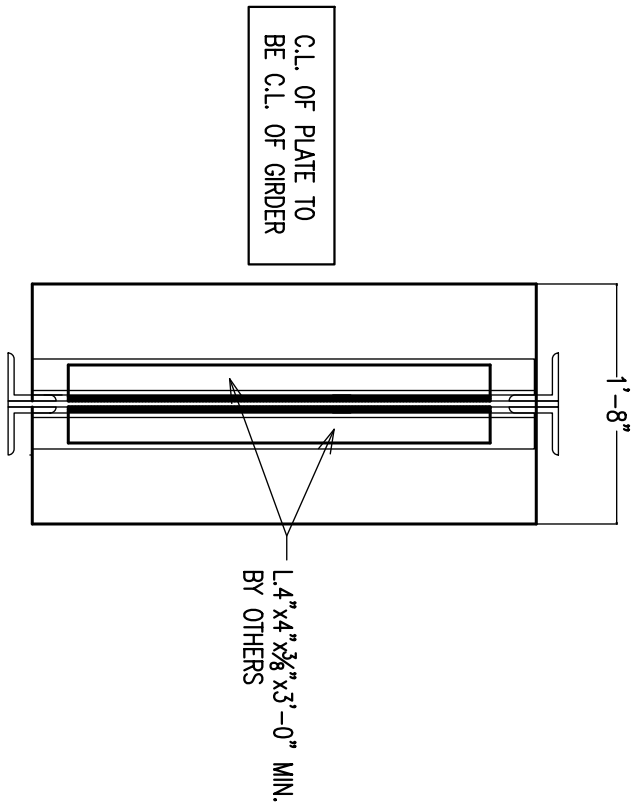
PRESTRESSED CONCRETE WALL SYSTEMS



SECTION

Ry = ? kips

?
 JOIST GIRDER CONNECTION
 SCALE: 3/4" = 1'-0" 19 3/4" THICK PANEL



ELEVATION 'A'

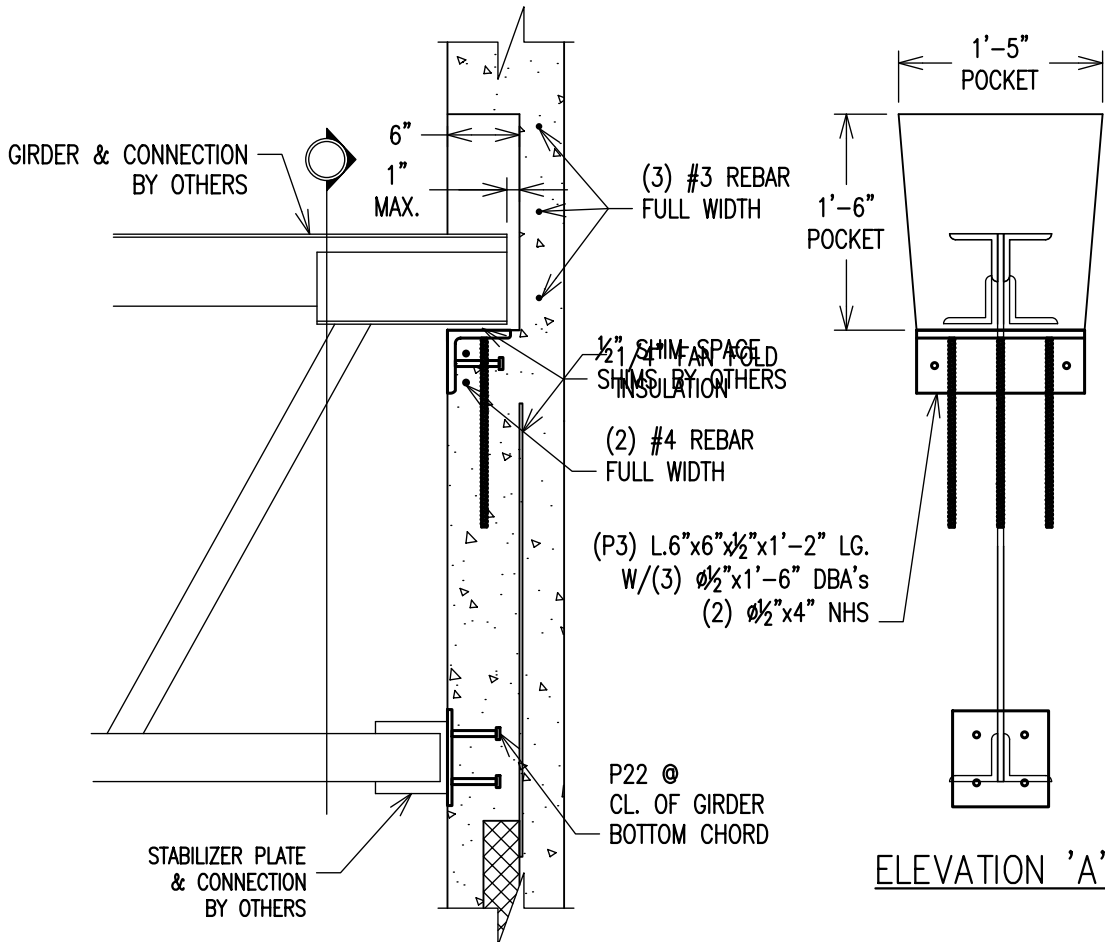
GIRDER CONNECTION

DATE: 2-3-09

DRAWN BY: IOP

REVISED: 12-7-10





? JOIST GIRDER POCKET

SCALE: 3/4" = 1'-0" 19 3/4" THICK PANEL

Ry = ?k

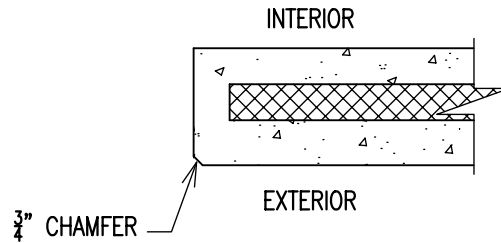
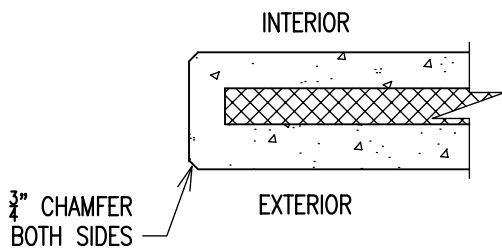
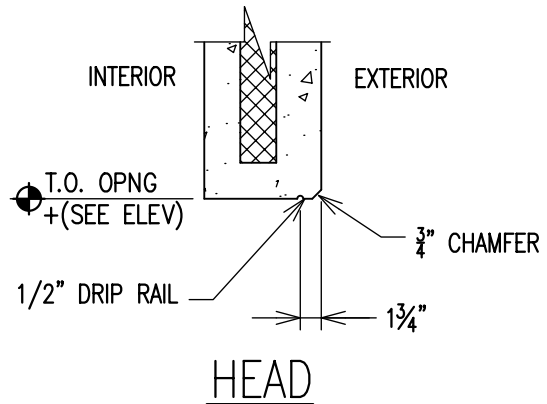
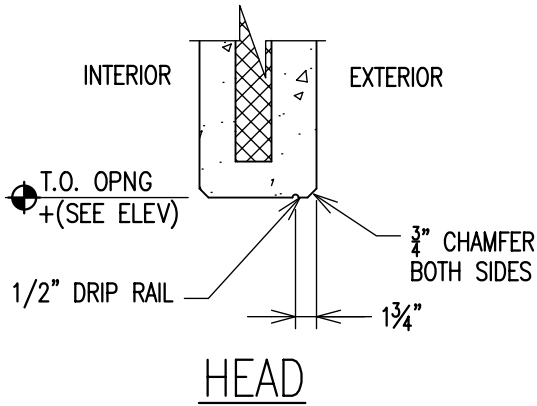


GIRDER POCKET CONNECTION

DATE: 2-3-09

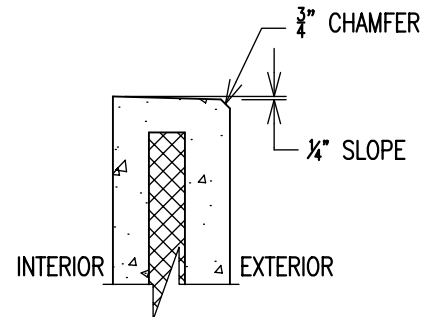
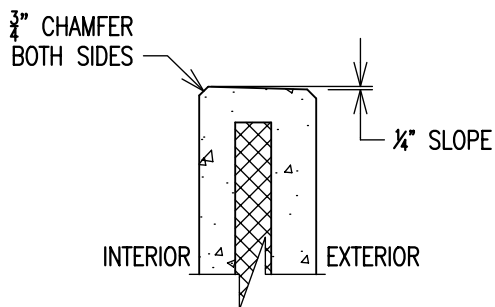
DRAWN BY: IOP

REVISED: 12-7-10



JAMB/SILL

JAMB/SILL



SLOPED SILL

SLOPED SILL

? | HEAD/JAMB/SILL DETAILS
 SCALE: 3/4" = 1'-0" 19 3/4" THICK PANEL



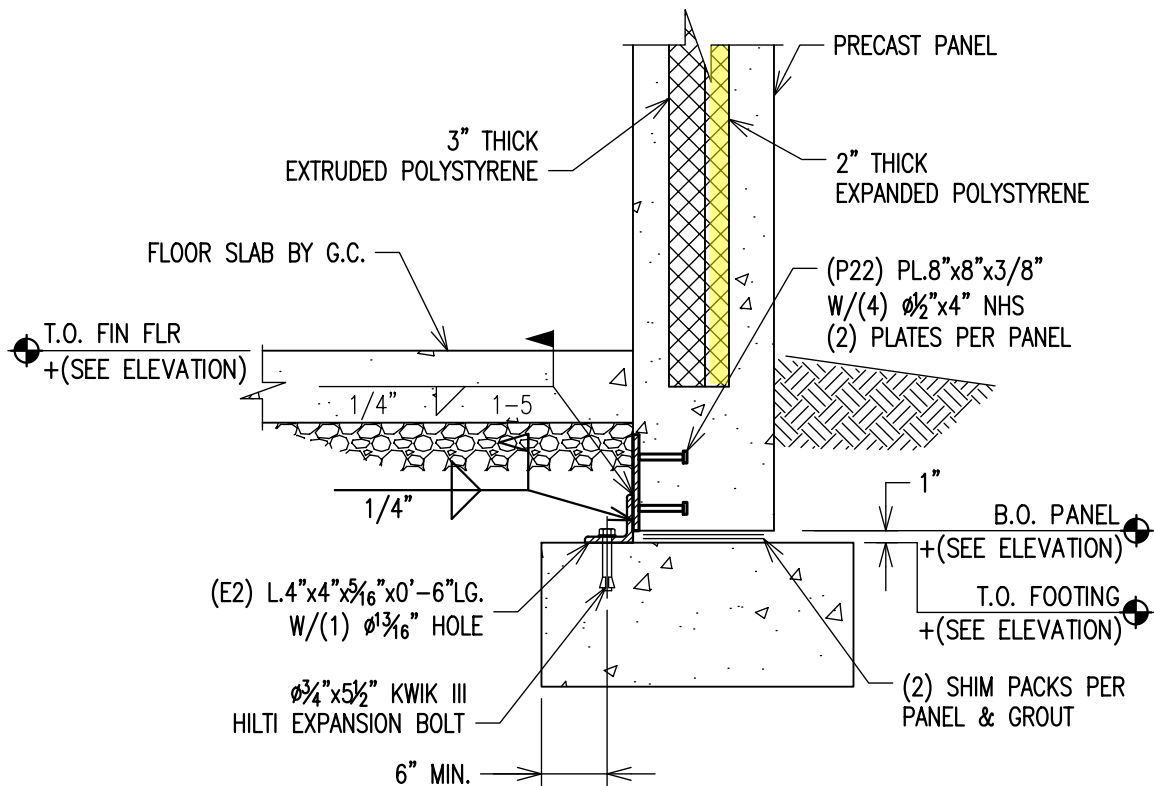
HEAD/JAMB DETAIL-DOOR/WINDOW

DATE: 2-3-09

DRAWN BY: IOP

REVISED: 12-8-10

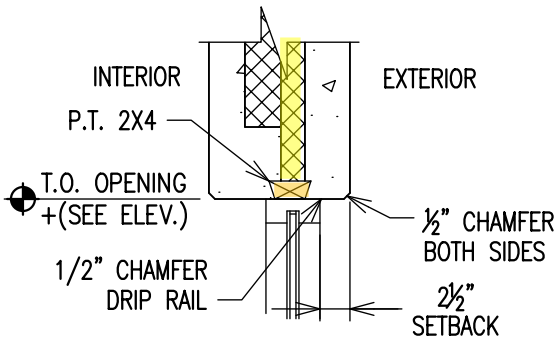
10.1



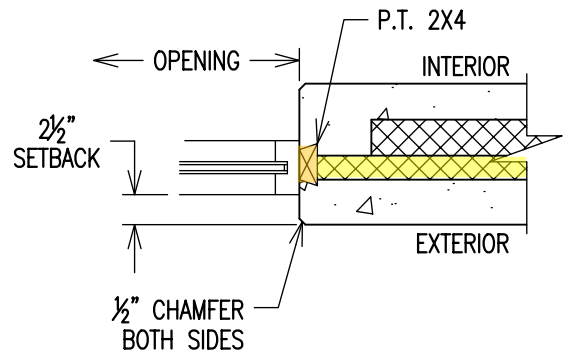
TYPICAL FOOTING CONN. - R-20 PANEL

DATE: 6-22-09

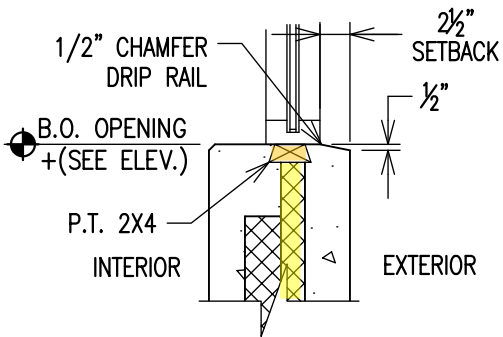
DRAWN BY: DJS



TYPICAL HEAD DETAIL



TYPICAL JAMB DETAIL



TYPICAL SILL DETAIL



TYPICAL HEAD/JAMB/SILL - R-20 PANE

DATE: 6-22-09

DRAWN BY: DJS